

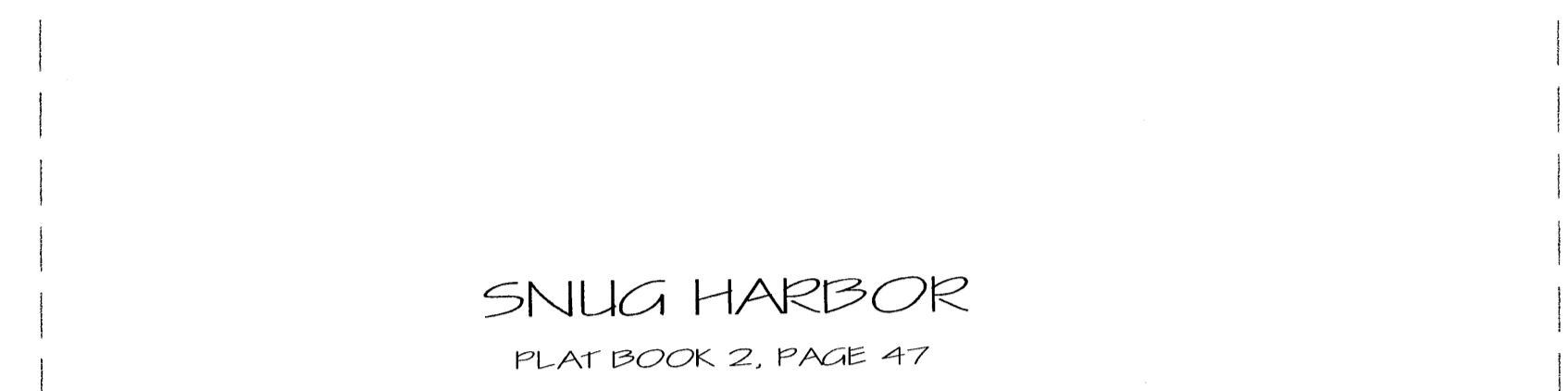
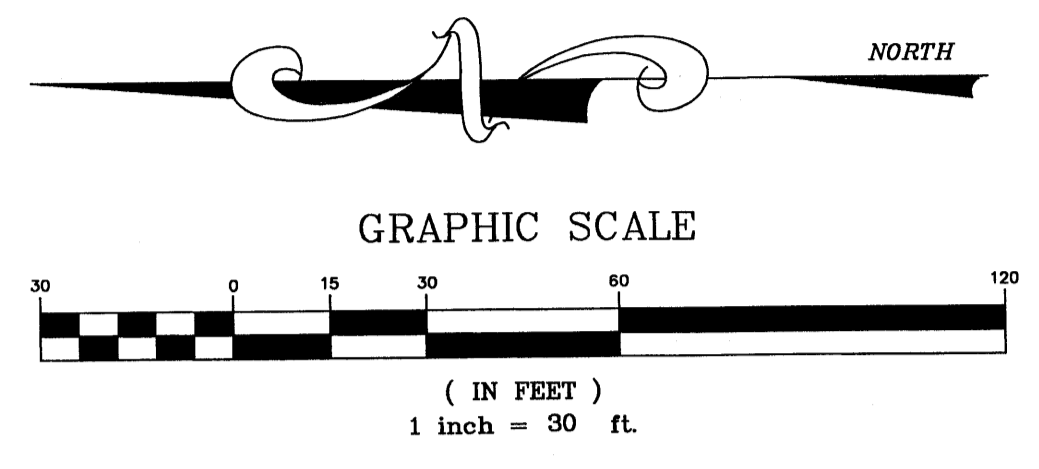
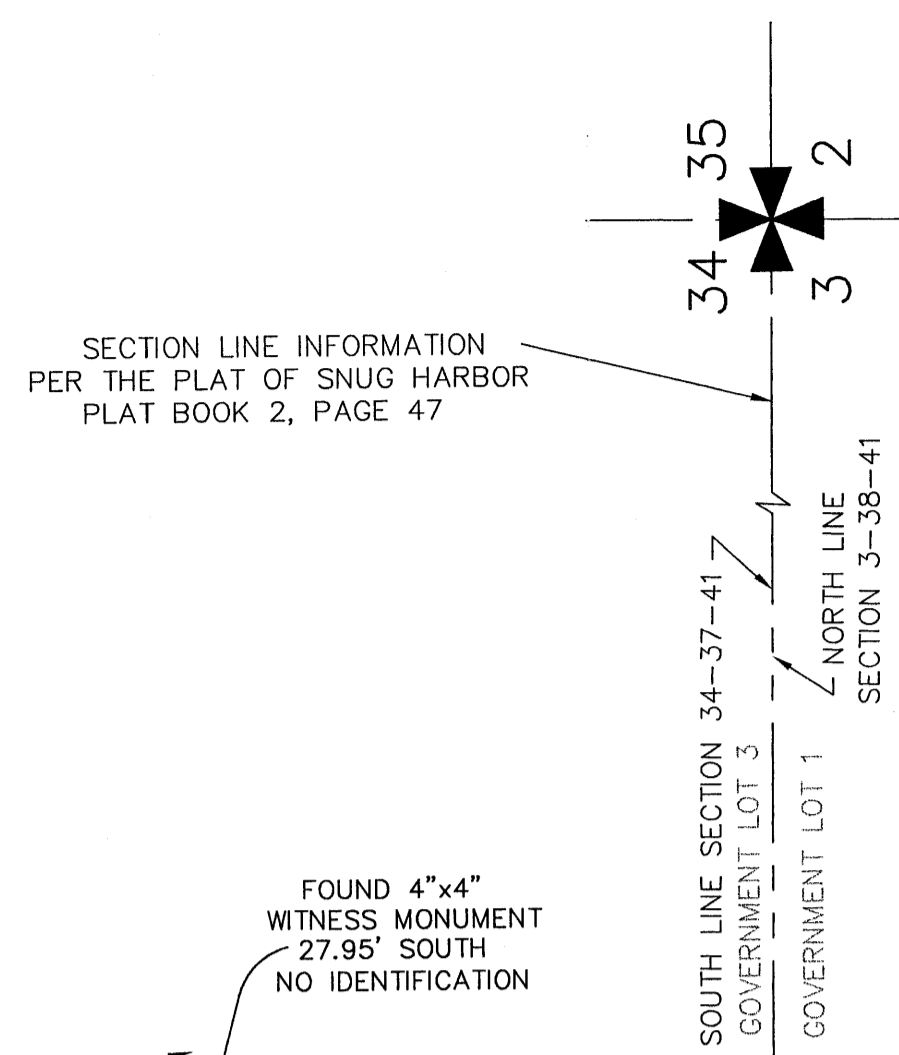
A PLAT OF SNUG HARBOR WEST

BEING A REPLAT OF A PORTION OF KRUEGER PARK, PLAT BOOK 1,
PAGE 25, SECTION 3, TOWNSHIP 38 SOUTH, RANGE 41 EAST AND
SECTION 34, TOWNSHIP 37 SOUTH, RANGE 41 EAST
CITY OF STUART, MARTIN COUNTY, FLORIDA

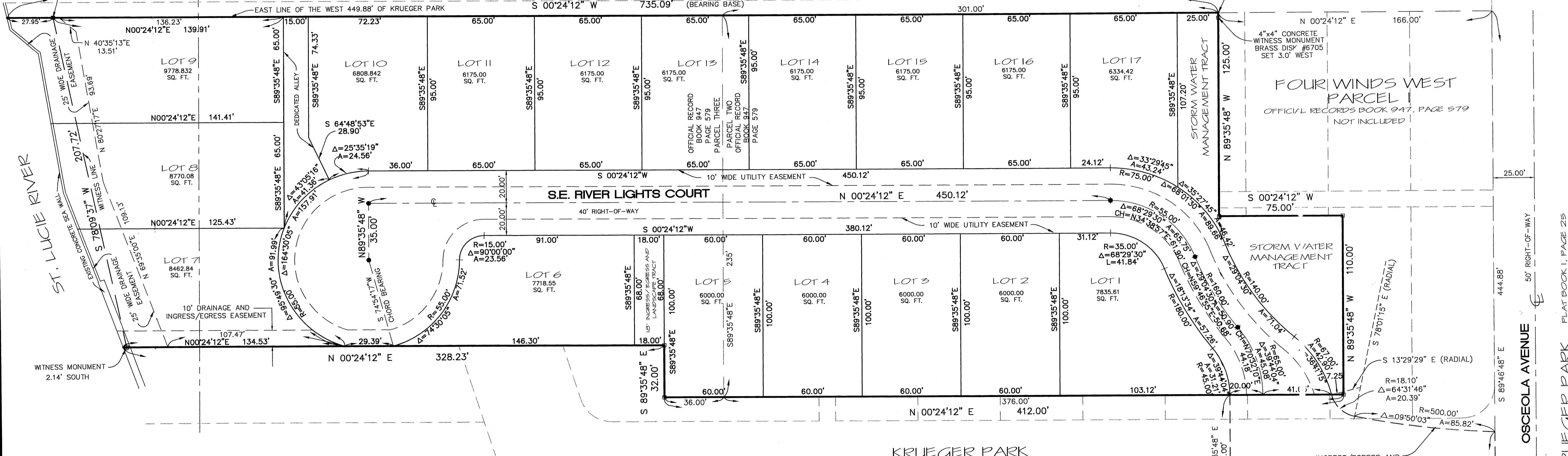
CLERK'S RECORDING CERTIFICATE
I, MARSHA EWING, CLERK OF THE CIRCUIT COURT
OF MARTIN COUNTY, FLORIDA, HEREBY CERTIFY
THAT THIS PLAT WAS FILED FOR RECORD IN
PLAT BOOK 15 PAGE 19 MARTIN
COUNTY, FLORIDA, PUBLIC RECORDS, THIS
DAY OF February 2002.

MARSHA EWING
CIRCUIT COURT
MARTIN COUNTY, FLORIDA
BY: *Clayton J. Caputo*
DEPUTY CLERK

FILE NO. 1550851



SUBDIVISION PARCEL CONTROL NUMBER



GENERAL NOTES

- 1) THE BEARINGS SHOWN HEREON ARE BASED ON DEED CALLS REFERENCING THE EAST LINE OF SUBJECT PARCEL BEARING SOUTH 00°24'12" WEST.
- 2) THERE MAY BE ADDITIONAL RESTRICTIONS THAT ARE NOT RECORDED ON THIS PLAT THAT MAY BE FOUND IN THE PUBLIC RECORDS OF THIS COUNTY.
- 3) THIS PLAT, AS RECORDED IN ITS ORIGINAL FORM IN THE PUBLIC RECORDS, IS THE OFFICIAL DEPICTION OF THE SUBDIVIDED LANDS DESCRIBED HEREON AND WILL IN NO CIRCUMSTANCES BE SUPPLANTED IN AUTHORITY BY ANY OTHER FORM OF THE PLAT, WHETHER GRAPHIC OR DIGITAL.
- 4) THE NATIONAL FLOOD INSURANCE PROGRAM DESIGNATION AS INDICATED ON THE F.E.M.A. MAP PANEL NO. 120162 0005 D, LOCATES THE PARCEL IN ZONES X AND AE. SUBJECT TO ANY SCALING AND INTERPOLATION FACTORS ASSOCIATED WITH MAPPING OF THIS ACCURACY.
- 5) THE ELEVATIONS DEPICTED ON THIS PLAT ARE BASED ON N.G.V.D. OF 1929, REFERENCED AS ADMIN-1 WITH ELEVATION 8.606 ESTABLISHED AS A SQUARE CUT IN THE CENTER OF A CONCRETE SIDEWALK IN THE CENTER LINE WITH THE WESTERLY ENTRANCE TO THE MARTIN COUNTY ADMINISTRATION CENTER BUILDING ON THE EAST SIDE OF MONTEREY ROAD.
- 6) THERE SHALL BE NO BUILDINGS OR OTHER PERMANENT STRUCTURES PLACED ON OR WITHIN ANY EASEMENTS.

LEGEND

- = FOUND 4"x4" CONCRETE MONUMENT
- = SET PERMANENT REFERENCE MONUMENT, 4"x4" CONCRETE MONUMENT WITH DISK STAMPED LB #6705
- = FOUND NAIL AND DISC #5102
- = PERMANENT CONTROL POINT, PK NAIL AND DISK LB #6705
- ⊙ = CENTERLINE
- R = CURVE RADIUS
- △ = CURVE CENTRAL ANGLE
- A = ARC LENGTH
- CH = CHORD BEARING AND DISTANCE
- SQ. FT. = SQUARE FEET

FOUR WINDS WEST
PARCEL I
OFFICIAL RECORDS BOOK 947, PAGE 579
NOT INCLUDED IN THIS PLAT

ENGINEERS INC.
CREECH ENGINEERS, INC.
CIVILIZATION ENGINEERED

203 WEST 3rd STREET STUART, FLORIDA 34994 (561)283-1413
4450 WEST EAU GALLIE BLVD., MELBOURNE, FL 32934 (321) 255-5434
707 EAST PARK AVENUE, TALLAHASSEE, FL 32301 (850) 841-1705

BOARD OF PROFESSIONAL ENGINEERS, CERTIFICATE OF AUTHORIZATION NUMBER 5139
PROFESSIONAL SURVEYORS AND MAPPERS, AMENDED CERTIFICATE NO. LB-0066705

POINT OF COMMENCEMENT
SOUTHWEST CORNER
LOT 10, BLOCK 3
KRUEGER PARK
PLAT BOOK 1, PAGE 25

S:\survey_drawings\2006\20069\PLAT.dwg Mod Jan 15 15:36:41 2002 Creech Engineers